

TN GRID NORTH MAD 83  
CGF 0.99995359

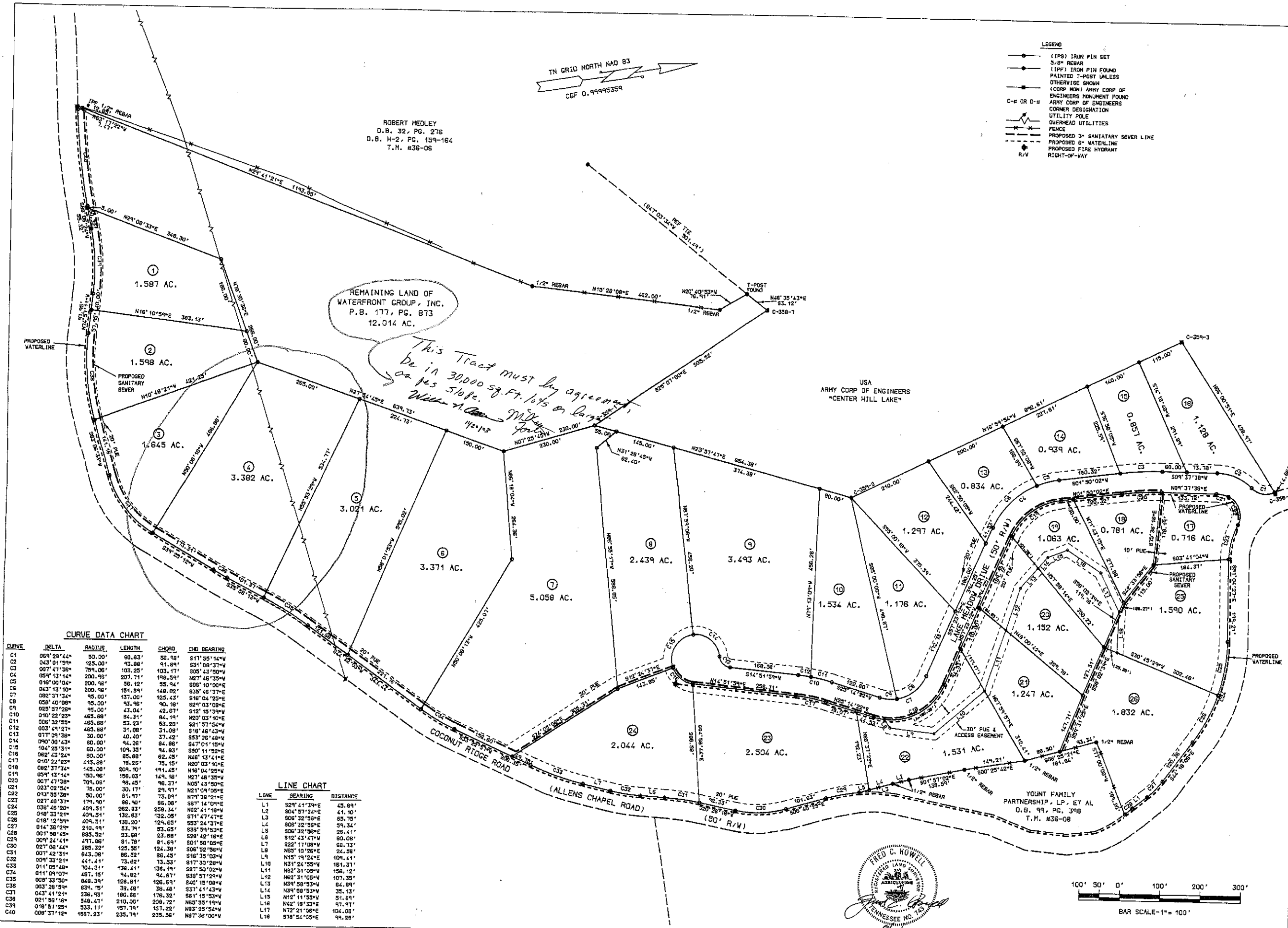
ROBERT MEDLEY  
D.B. 32, PG. 276  
D.B. H-2, PG. 159-164  
T.M. 438-06

- LEGEND
- (IPS) IRON PIN SET
  - 5/8" REBAR
  - (IPF) IRON PIN FOUND
  - PAINTED T-POST UNLESS OTHERWISE SHOWN
  - (CORP MON) ARMY CORP OF ENGINEERS MONUMENT FOUND
  - ARMY CORP OF ENGINEERS CORNER DESIGNATION
  - UTILITY POLE
  - OVERHEAD UTILITIES
  - FENCE
  - PROPOSED 3" SANITARY SEWER LINE
  - PROPOSED 6" WATERLINE
  - PROPOSED FIRE HYDRANT
  - RIGHT-OF-WAY

REMAINING LAND OF WATERFRONT GROUP, INC.  
P.B. 177, PG. 873  
12.014 AC.

*This Tract must by agreement be in 30000 sq. Ft. lots or larger with 5% slope.*

USA  
ARMY CORP OF ENGINEERS  
"CENTER HILL LAKE"

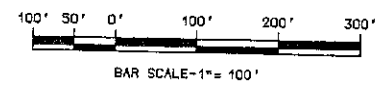


CURVE DATA CHART

CURVE	DELTA	RADIUS	LENGTH	CHORD	CHD BEARING
C1	059°28'44"	50.00'	60.83'	58.98'	S17°35'14"W
C2	043°01'59"	125.00'	153.88'	91.89'	S31°08'37"W
C3	007°41'35"	279.00'	103.25'	103.17'	S05°43'50"W
C4	059°13'14"	200.95'	207.71'	198.59'	N27°48'35"W
C5	016°00'04"	200.95'	56.12'	55.94'	S08°10'00"E
C6	043°13'10"	200.95'	151.59'	148.02'	S35°46'37"E
C7	082°31'34"	75.00'	137.00'	123.43'	S18°04'25"E
C8	058°40'09"	95.00'	93.96'	90.18'	S21°03'08"E
C9	025°51'25"	95.00'	43.04'	42.57'	S12°15'39"W
C10	010°22'23"	465.88'	84.31'	84.14'	N20°03'10"E
C11	006°32'55"	465.88'	53.23'	53.20'	S21°37'54"W
C12	003°41'27"	465.88'	31.08'	31.08'	S18°46'43"W
C13	077°09'38"	30.00'	40.40'	37.42'	S23°26'48"W
C14	090°00'43"	60.00'	44.26'	44.86'	S47°11'18"W
C15	104°25'31"	60.00'	109.35'	94.83'	S50°11'52"E
C16	062°43'24"	80.00'	85.88'	62.45'	N48°13'41"E
C17	010°22'23"	475.88'	78.26'	78.15'	N20°03'10"E
C18	082°31'34"	145.00'	209.10'	191.45'	N48°04'25"W
C19	059°13'14"	150.96'	156.03'	149.18'	N27°48'35"W
C20	007°41'35"	705.06'	96.45'	96.37'	N05°43'50"E
C21	023°02'54"	75.00'	30.17'	29.47'	N21°09'05"E
C22	043°01'59"	90.00'	81.97'	73.09'	N79°38'21"E
C23	027°40'37"	178.90'	96.98'	96.98'	N79°38'21"E
C24	036°46'20"	409.51'	262.83'	259.34'	S81°44'09"E
C25	018°33'21"	409.51'	132.83'	132.05'	S71°47'47"E
C26	018°12'59"	409.51'	130.20'	129.65'	S53°24'37"E
C27	014°38'59"	210.99'	31.79'	31.79'	S39°39'53"E
C28	001°58'45"	685.32'	23.68'	23.58'	S28°42'18"E
C29	009°24'41"	471.86'	81.78'	81.69'	S01°38'05"E
C30	027°08'44"	265.32'	125.55'	124.38'	S08°32'56"W
C31	007°42'31"	843.08'	86.32'	86.43'	S18°35'03"W
C32	009°32'12"	178.90'	96.98'	96.98'	S17°30'28"W
C33	011°05'48"	704.54'	136.41'	136.19'	S27°50'29"W
C34	011°09'07"	487.15'	94.82'	94.87'	S29°57'25"W
C35	008°33'50"	849.39'	126.81'	126.61'	S40°15'08"W
C36	003°28'59"	634.15'	39.48'	39.48'	S37°41'43"W
C37	043°41'21"	236.73'	160.68'	176.32'	S61°15'53"W
C38	021°56'16"	548.47'	210.00'	209.72'	N83°35'10"W
C39	016°51'25"	533.11'	157.79'	157.22'	N82°28'52"W
C40	008°37'12"	1581.23'	235.19'	235.56'	N87°36'00"W

LINE CHART

LINE	BEARING	DISTANCE
L1	S29°41'39"E	45.89'
L2	S24°51'24"E	41.10'
L3	S08°32'56"E	85.75'
L4	S08°32'56"E	99.34'
L5	S06°32'56"E	28.41'
L6	S12°43'47"W	60.08'
L7	S22°11'08"W	88.73'
L8	N05°10'28"E	24.58'
L9	N15°19'24"E	109.41'
L10	N31°24'55"W	181.31'
L11	N62°31'09"W	156.12'
L12	N62°31'09"W	107.35'
L13	N29°58'53"W	64.89'
L14	N39°58'53"W	35.13'
L15	N12°11'53"W	51.69'
L16	N42°19'33"E	97.97'
L17	N72°21'08"E	104.08'
L18	S18°54'05"E	96.25'



BERKLEY HOWELL & ASSOC., P.C.  
ENGINEERS • SURVEYORS • PLANNERS  
308 ENTERPRISE DRIVE, SUITE C  
FOREST, VIRGINIA 24551  
PH: (434) 385-7548 FAX: (434) 385-8178

FINAL PLAT OF  
SECTION I  
CHAPEL HILLS SUBDIVISION  
FOR WATERFRONT GROUP, INC.  
9TH CIVIL DISTRICT - DEKALB COUNTY, TN

DATE: 8-1-03

TECHNICIAN:

CHECKED BY:

REVISIONS

NO.	DATE

SCALES AS SHOWN

PROJ. NO. 030031 DIV.

SHEET NO. 2 OF 2

DRAWING NO. \*SUB01\*

MANUSCRIPT DRAWING NUMBER: FIELDBOOK IDENTIFICATION: VIEWS TO CREATE THIS DRAWING: SURVEY DATUM USED: